

# INSTALLATION INSTRUCTIONS TOYOTA TUNDRA [2012 – 2018]

SourceLT



Allow approximately 2 hours for installation

## TOOLS REQUIRED:

- Phillips head screw driver
- T-20 Torx bit
- Various sockets (for battery terminal connections)
- 3/16" diameter drill bit and drill (for Source bracket)
- DREMEL tool, small saw or box knife (for cable hole in overhead console)

## CORE COMPONENTS LIST:

1. The Source assembly, which includes (1) mounting bracket, (1) lid, (2) battery cables and (4) ¼-20 screws and flat washers;
2. The switch panel assembly, which includes (1) switch panel and (1) mounting bracket;
3. (1) Control harness;
4. (6) Switches (pre-installed into panel);
5. (1) Pigtail switch harness (pre-installed into panel);
6. (1) Packet of spade terminals, shrink tubing, zip-ties and our Tips & Tricks tri-fold (KEEP THIS!)

## INSTALLING THE SWITCH PANEL

- Remove the driver side A-Pillar plastic piece.
- Remove the driver side sun visor and loosen screws that hold the headliner up.
- Open the two compartments closest to the windshield (sunglass holder and business card holder). Inside each compartment, you'll find (2) T-20 screws. Remove them with the T-20 Torx driver.
- Grasp the rear part of the overhead console. Pull it down a few inches and then push it forward to unhook the front clips. Lower the overhead console a few more inches. Unplug the wiring harness attached to it to remove it from the Tundra.
- Cut a minimum of a 1" square or hole in the sunglass holder compartment, big enough to fit the white connector plug.
- After white connector plug has been fed through, reinstall the overhead console. Tuck the harness inside the headliner at the windshield, towards the driver side A-Pillar.
- Reinstall the overhead by re-installing the T-20 Torx screws, except in the compartment that is for the switch panel. Install the switch panel bracket using 2 of the T-20 Torx screws.
- Plug the two harnesses into each other (the grey connectors). Listen for a firm double snap.
- Stop here and proceed to the Source installation. It is best to get everything else set up and tested before reassembly.



**NOTE:** This is how you turn the lower pilot lights on. Push once to turn on, push again to turn off.



**AFTER INSTALLATION, YOU  
MUST START THE ENGINE TO  
ACTIVATE THE SYSTEM!!**

## NOTES & WARNINGS

- Never reverse polarity on battery cables.
- Chassis ground the sPOD's negative battery cable.
- Always attach both positive and negative accessory wires to the sPOD's terminals.
- Any modifications to any of the sPOD wire harnesses will void the warranty.
- Although the sPOD system is weather proof, do not submerge in water. Do not spray cleaner onto unit or into any openings. Always use a soft towel or cloth for cleaning purposes and or compressed air to dry.
- System will shut down when voltage drops to 11.6 V (2-minute delay) and requires 12.8 V to reinitialize (start engine).
- Do not tamper, open or remove any factory-installed components; this will void the warranty.
- Do not replace 2amp fuse with any other rated fuse; this will void the warranty.
- Do not attach any additional electrical accessories to the battery terminals on the BantamX/SourceLT; this will void the warranty.
- The BantamX/SourceLT does not require the use of relays or fuses unless the accessory attached draws more than 30amps
- The BantamX/SourceLT employs self healing circuits. In the event of a short/overload, the circuit will shut off. Correct the short/overload, then cycle the switch on and off to reset.

## INSTALLATION PROCEDURE

- Locate a clean/dry flat area as close to the battery as possible (on top of the OEM fuse box lid is a great location if possible). Test the fit before installing by closing the hood to be sure there is plenty of clearance. **Please do NOT locate the BantamX | SourceLT below or near hood vents or in wheel-wells that may be exposed to water!**



Test the fit first to be sure there is enough clearance and easy access.



If using the fuse box lid, remove for the next step

- Cut the supplied template to the outer lines, locate a spot that will fit the 4 screw posts. Verify that there are no obstructions underneath the fuse box lid. Next tape template into place and use the drill & 3/16" diameter drill bit to drill the 4 holes.



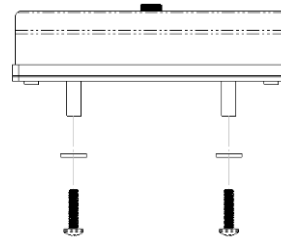
Place system on surface



Be sure hole pattern (3" x 3") fits surface



Place template and tape in place



Use the supplied screws and washers to fasten to the fuse box lid or surface

## CABLE ROUTING

- Run control cable through firewall from the cab. Find an existing passage through the firewall near the side the BantamX | SourceLT is located. Be sure to keep protective cap on during this process. Form a hook on the end of the fish line and wrap connector with a little electrical tape.

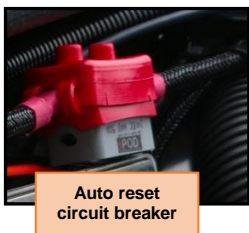
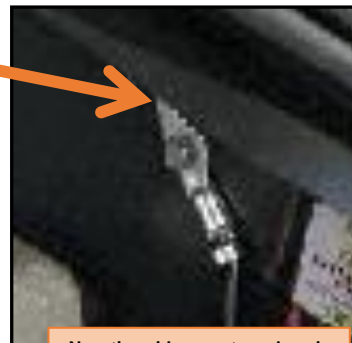
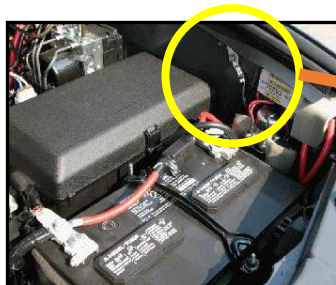


Cut a slit in this grommet  
And push cable through from  
inside to the engine compartment

- Run Ethernet control cable up from the bottom through the slot in plastic. Plug cable into any of the two receptacles.



- Snugly route power leads along over to the battery, using supplied cable ties to secure.
- Connect **Positive** wire to battery auxiliary terminals. Attach the **Negative** cable to a chassis ground stud. Use supplied cable ties to secure all cables.



**AFTER INSTALLATION, YOU MUST START THE ENGINE TO ACTIVATE THE SYSTEM!!**